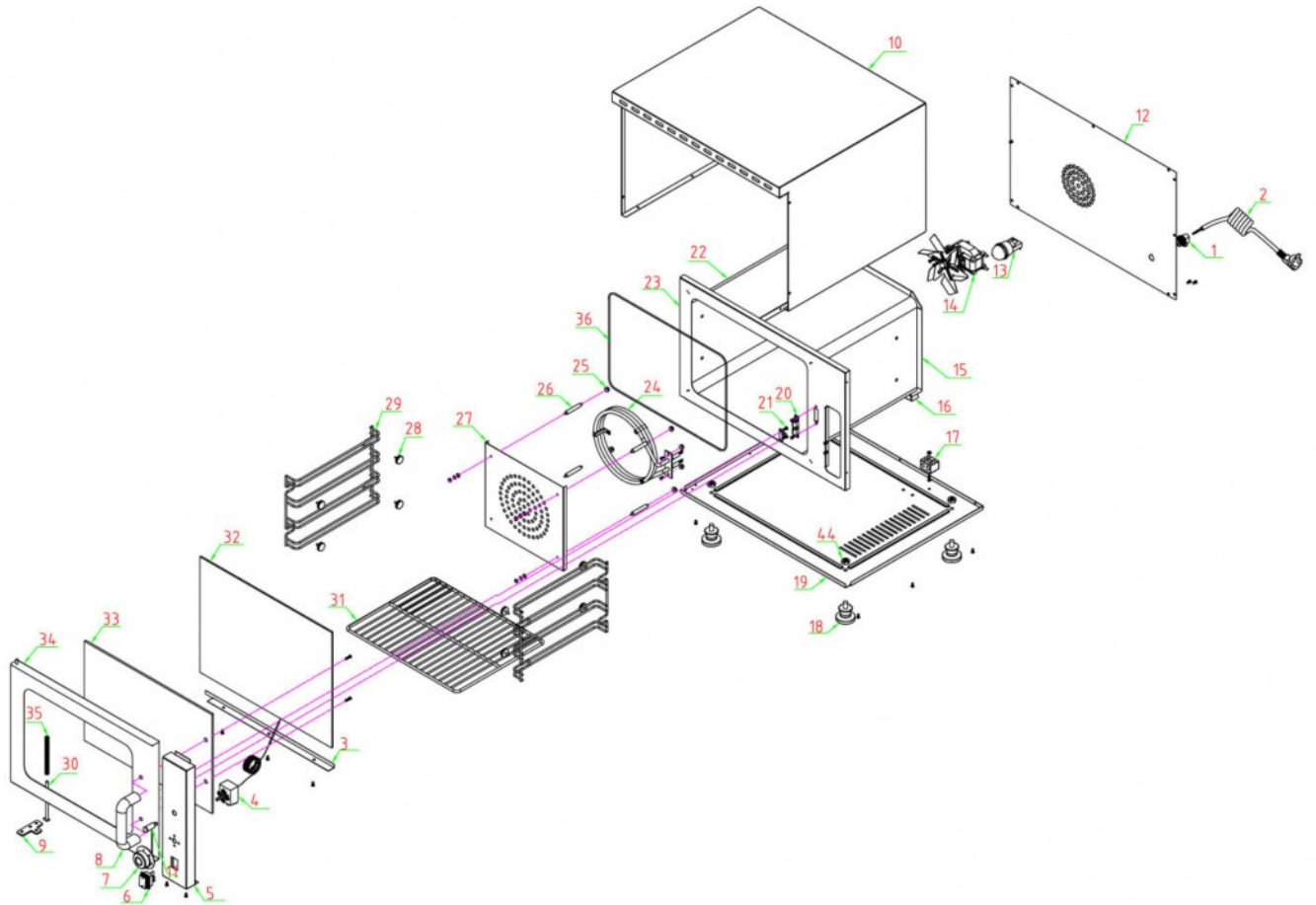


Exploded Diagram - CK1642



EN-10

NO.	Name	Spec.	pcs	Note
1	cord fixer		1	
2	power cord and plug		1	
3	bottom door board		1	
4	thermostat	250°C	1	
5	control panel		1	
6	switch		1	
7	knob base and knob		1	
8	handle		1	
9	hinge supportor		1	
10	outer body		1	
11	indicator		1	
12	back plate		1	
13	inner lamp with cover		1	
14	motor		1	
15	back plate of inner body		1	
16	inner body supportor		2	
17	terminal block		1	
18	feet		4	
19	bottom board		1	
20	ball lock		1	
21	screws for ball lock		4	
22	side plate of inner body		1	
23	front plate of inner body		1	
24	heater	2500W	1	
25	nuts for heater-cover		4	
26	screws for heater-cover		4	
27	heater-cover		1	
28	screws for shelves		8	
29	shelves		2	
30	shaft of hinge		1	
31	grid		2	
32	inner door glass		1	
33	outer door glass		1	